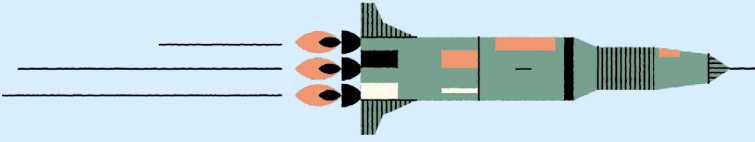


BRITISH LIBRARY

FREE  
DROP IN  
Suitable for  
all ages



# Family Day: Our World

Saturday 23 September 2023

12.00 – 16.00



In partnership with

Delivered in BSL  
and spoken English



The British  
Museum

# Enjoy an exciting family day celebrating community, language, nature and travel.

Activities take place throughout the day, unless a timeslot is included.



Remember to stamp all the areas you visit. When you get home, see how many words you can make with the letters you collect. Then create a story out of the words!

## ORANGE AREA

Floor 1

### Our Feathered Friends with the British Museum

Make a rocking bird inspired by objects from around the world.



### The World of Origami with the Origami Society

Try your hand at making a paper origami model using simple folds.



### Family Fun with SOAS, University of London

Join friends from University of London for some fun, family activities.



### Pattern is Everywhere with the Victoria and Albert Museum

Hunt for shapes and patterns to construct your very own pattern book.



## GREEN AREA

Upper Ground Floor

### The Signing Stars Special performance at 14.00

Enjoy Frank Barnes School for Deaf Children and King's Cross Academy signing choir performing some of their favourite songs.



### These Are a Few of my Favourite Things! with Camden Advisory Service and Speech & Language Therapy Team for Deaf Children and Young People

Find out what we do and have a go at a fun-filled creative activity.



### Look and Seek with Camden Family Learning

Discover a new world of fun using your personalised binoculars.



### A World of Wildlife with London Zoo

Create your favourite animal at our arts and crafts table, plus find out about our conservation work and Accessible Activities.



### At the Bottom of My Garden with the National Deaf Children's Society & North London Deaf Children's Society

Be inspired by a mini beasts rhyme and sign story, and make a garden bug home.



---

## Amazing Mazes with the University of Bath

Try cracking our wonderful puzzles and mazes, and discover how computers are so good at it.



## PURPLE AREA

Lower Ground Floor,  
Harry M Weinrebe Learning Centre

---

## Nest and Rest with the British Library

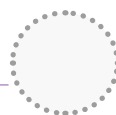
Play with light, projected images and fun materials to make a family nest. Then get comfy, relax and enjoy some well-deserved rest!



---

## Make a Poo with Francis Crick Institute

Create your own fake poo and learn all about the bugs that live in your tummy.



---

## National Costume Dress-Up Station with Frank Barnes School for Deaf Children

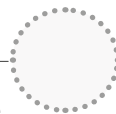
Dress up in a national costume and have your photo taken against a background from that country.



---

## How I See Myself

Create colourful self-portraits – without mirrors! How do you see yourself today or in the future?



---

## Flowers and Fruits of the World Unite with October Gallery

Design your own headdress by bringing together flowers and fruits from near and far. Explore culture, biodiversity and identity along the way.



---

## BSL Storytelling: Postcards from Around the World with the Postal Museum

12.45 – 13.30 and 14.45 – 15.30

Interactive storytelling exploring the world around us. Design your own postcard and send it through the post using a special postage stamp.



---

## An Introduction to British Sign Language with Royal Association for Deaf people

13.45 – 14.30

Join us for a family friendly BSL taster workshop.



---

## BLUE AREA

Knowledge Centre  
Under 5s zone

---

## Pop-Up Reading Area

Books for all the family to enjoy, including braille and tactile editions.



---

## Make your Own Sensory Book with the Foundling Museum

Crinkle, crease, wrap and squish materials to make a sensory book inspired by the story of the Foundling Hospital.



---

## Sensory Collages with Holborn Community Association

Explore the sights, sounds and textures of our world through this multi-sensory investigation station. Then create your own artwork!



## Time to Dance! with Sadler's Wells

12.15 – 12.45, 13.15 – 13.45  
and 15.15 – 15.45

Enjoy dancing together and gain a sneak peek of Sadler's Wells' upcoming performances.



## Create a Number Garden with Maths on Toast

Explore a creative way to practice counting, number bonds and times tables with beautiful number flowers.



## AROUND THE LIBRARY

### Feedback

Tell us about your day! Our interactive trolley will be travelling around the Library capturing all your thoughts and feelings.

Share your day by tagging  
[@britishlibrary](#) using [#DeafFamilyDay](#)



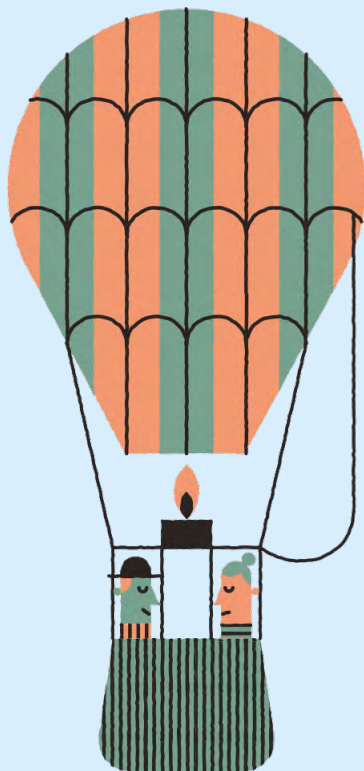
**Buggy Park, Cloakroom and Locker Room are located on the Lower Ground Floor.**

## Explore the rest of the Library

Treasures of the British Library

FREE

Telling the remarkable stories of over 2,000 years of human experience, our Treasures Gallery introduces you to some of the most awe-inspiring items in our collection.



## Floor 1

### Mezzanine area

Toilets ♿♿♿

Café

### Upper Ground

Treasures Gallery

Toilets ♿♿♿

Café

### Ground Floor

Welcome Desk

PACCAR Gallery 1&2

Café

Shops

### Lower Ground

Learning Centre

Buggy park

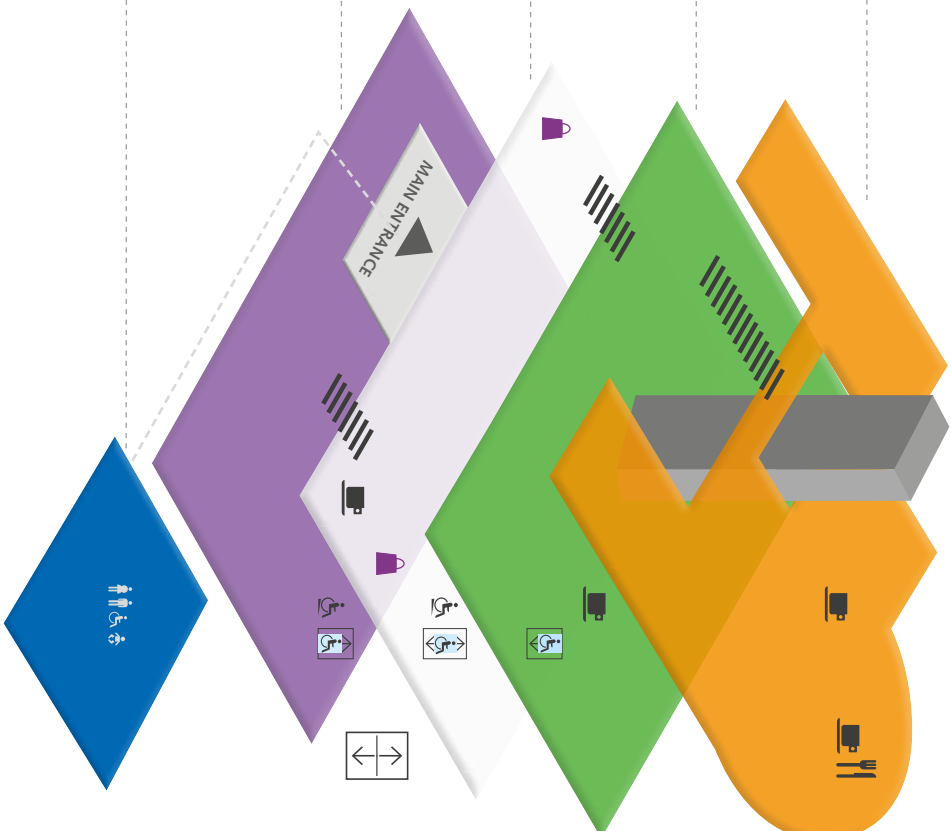
Cloakroom

Lockers

Toilets ♿♿♿

**Knowledge Centre** ♿♿♿

Located outside, via  
main entrance and  
across the Piazza



### Eat and Drink

Highchairs are available in our cafés, where you can pick up a variety of child-friendly food including sandwiches and jacket potatoes.


### Shop

Books, toys and gifts for a range of ages.

 Lift to all floors (except G)

 Accessible lift

 Ramp

 King's Library



## Planning your next visit

---

To find out more about our family programme, including upcoming Family Days, workshops, trails, our monthly Family Station and online resources, visit [bl.uk/families](https://bl.uk/families)

### Contact us

[familylearning@bl.uk](mailto:familylearning@bl.uk)

T +44 (0)207 412 7797

[@BL\\_Learning](https://twitter.com/BL_Learning)

Sign up for our family emails at [bl.uk/families](https://bl.uk/families)

THE BRITISH  
LIBRARY